

SPECIFICATION & PRICELIST

Dehler  **30od**



TECHNICAL DATA

LOA 10.30 m / 33' 10"

HULL LENGTH 9.14 m / 30' 0"

LWL 8.97 m / 29' 5"

BEAM 3.28 m / 10' 9"

AIRDRAFT 14.30 m / 46' 11"

DRAUGHT
T - KEEL 2.20 m / 7' 3"

BALLAST
T - KEEL 0.94 t / 2,072 lbs
WATERBALLAST 0.2 t / 441 lbs

DISPLACEMENT
T - KEEL 2.8 t / 6,173 lbs

ENGINE APPROX. Diesel 10 PS / hp

FRESH WATER TANK approx. 40 l / 10.57 gal

FUEL TANK approx. 25 l / 6.60 gal

MAIN SAIL 33.50 m² / 361 sq ft

JIB 105% 28.20 m² / 304 sq ft

STAYSAIL 15.00 m² / 161 sq ft

CODE - 0* 52.00 m² / 560 sq ft

GENNAKER A2* 100.00 m² / 1,076 sq ft

GENNAKER A5* 85.00 m² / 915 sq ft

RIG IG 12.20 m / 40'
J 4.11 m / 13' 5"
P 12.00 m / 39' 4"
E 3.90 m / 12' 8"

CE CERTIFICATE A - 4

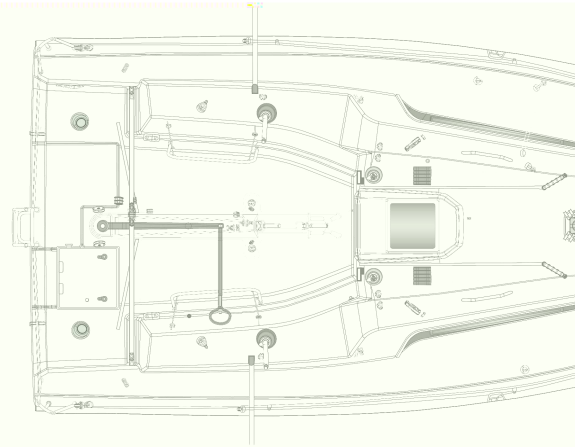
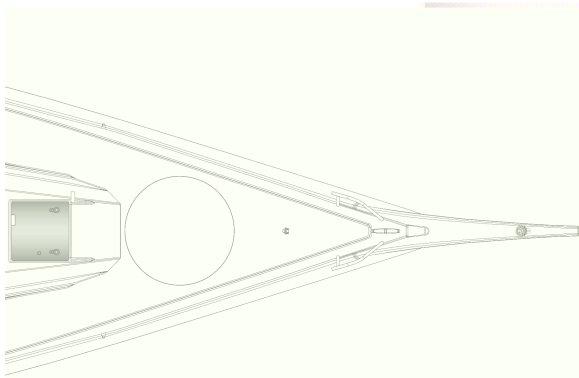
DESIGN judel/vrolijk & co.

INTERIOR judel/vrolijk & co. - Dehler

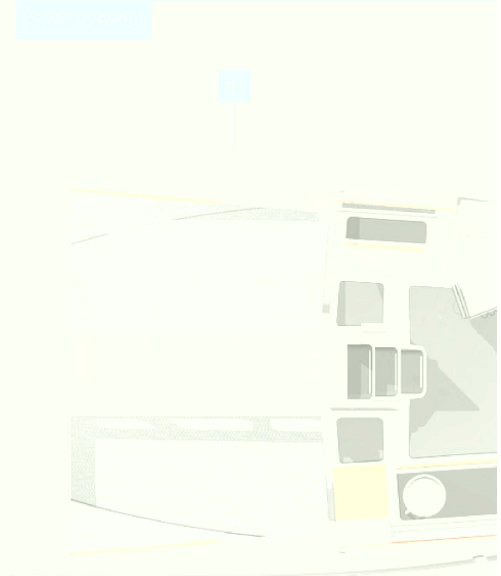
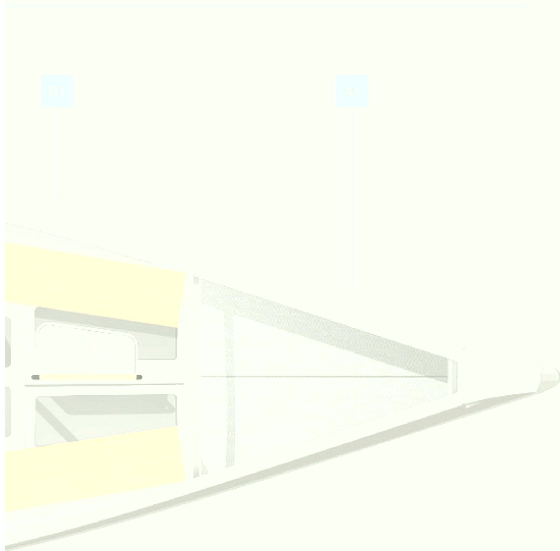
DEHLER STEALTH DRIVE Bieker Boats

All measurements/figures are approximate. Errors and omissions excepted. Specification and material can be changed without notice. Valid from 2023.01.01 for deliveries until 2023.12.31.

DECK LAYOUT



INTERIOR LAYOUT



HULL

- GRP hull, built in vacuum infusion with PVC sandwich core and high-performance isophthalic gelcoat, colour: Light Grey, 1st layer vinyl ester resin
- High-rigid GRP bottom structure with "Dehler carbon cage"
- Waterline gelcoat, colour: Dehler Red

KEEL

- T-keel, GRP fin with lead bulb, draft: 2.20 m
- GRP twin-rudder with self-aligning bearings

LAYOUT & INTERIOR

- A1: Stowage room with 2 foldable hatches, "bow crashbox", bulkhead
- B1: Saloon with stowage in seats, could moulded light plywood bench, foldable, mast support aluminium
- C1: Pantry block on stb with washing basin, tap, 1 flame gas stove and integrated cuttingboard. Wet space with manual toilet and stowage on ps. Aft berth with stowage, both sides.
- D30 one design companionway with functional stairs and engine box
- Saloon table, folding with aluminium handrail

WOOD (FURNITURE, FLOORBOARD)

- Folding door, saloon table and benches in wood (Oak) and handrails in carbon

UPHOLSTERY

- Mattresses for aft berths (th. 80mm)
- Upholstery cabin - Sunbrella, colour: Grey

DECK & OUTSIDE EQUIPMENT

- GRP deck, built in vacuum infusion with PVC sandwich core and high-performance isophthalic gelcoat, colour: Light Grey, 1st layer vinyl ester resin
- Flexiteek on cockpit floor and cockpit benches
- Tiller steering system on deck with adjustable connecting rod and Spinlock tiller extension - Stern locker on stb, central GRP footrest at cockpit bottom, adjustable stainless steel footrest for helmsman
- Pulpit and pushpit
- Railing, stainless steel stanchion with stainless steel wire
- Halyards and control lines with organizers and jammers on coach roof, retractable mooring cleat
- 2 LEWMAR 40 ST EVO Race Plus manual halyard winches
- 2 LEWMAR 40 ST EVO Race Plus manual secondary winches
- Life raft storage in aft cockpit ps with cover
- Composite bowsprit with bobstay and padeye for tacklines, high-performance isophthalic gelcoat, colour: Light Grey, 1st layer vinyl ester resin
- "3D" genoa barberhauler for jib, adjustable from cockpit
- Mainsheet with purchase system 1:6 / 1:24 transmitted on GRP base with swifel arm at cockpit bottom.

Mainsheet traveller at side deck level in aft cockpit

- 1 Lewmar sz. 44 deck hatch on coach roof fwd of mast - flush, 1 Lewmar Mitre Sz. 0 portlight each side in cockpit
- 2 Coach roof windows, Dodger sliding hatch with window, halyard bags stb/ps

RIG & SAILS

- Rig, carbon, 1 set of spreaders, deck stepped incl. rod rigging, aluminium boom, 1 main halyard, 1 jib halyard „9/10“, 2 reefs, 2 manual dyneema backstay in cockpit, manual vang, outhaul, cunningham

NAVIGATION & INSTRUMENTS

- Illuminated compass at companionway
- LED navigation lights

PROPULSION

- Engine (Diesel, approx. 9.9 hp), Dehler 30 one design 'Stealth Drive' retracting concept, operated from cockpit, 3 blade fixed propeller, 12 V - 70 A Alternator - Fuel tank, transparent, approx. 25 l

EQUIPMENT

- 12 V electric system with main panel, 12 V USB socket
- Battery set - capacity: Starter and service battery: Li-Io 1 x 90 Ah
- LPG gas system, stowage for 1 bottle
- Waterballast, appr. 200 l each side with electric pump and valves, overboard discharge
- Manual and electrical bilge pump with control panel
- Black water system (appr. 35 l) with deck extraction and seacock for head
- Fresh water system with manual pump
- Fresh water tank, flexible, appr. 40 l

SHIPPING & TRANSPORT

- CE - Certificate cat. A - 4 / B - 6
- Owners manual
- EC - Type Examination Certificate
- One Design Measurement

AS PER STANDARD SPECIFICATION

excl. VAT
150.900 €

PACKAGES

XW2000	B&G Navigation Package	3.790 €
XF2213	2 B&G Triton ² multifunction displays next to companionway, incl. wireless wind sensor (WS320) and speed / depth sensor (DST800)	
XF3000	B&G VHF V60, incl. wireless remote handset H60	
XH2155	Portable shore power pack (charger 12 V / 13 A, plug)	
XK5000	Antenna and B&G (NSPL-500) splitter for VHF, FM and AIS at mast top	
XW2001	Upgrade - chart plotter	2.290 €
XF4000	B&G Zeus ³ 7" chart plotter, at companionway	
XW2002	Upgrade - AIS transponder	1.390 €
XF4600	B&G AIS Class B transponder (NAIS-500) (only with chart plotter and XK5000)	
XW2003	Upgrade - autopilot	3.690 €
XF5000	B&G Autopilot, linear actuator below deck with Triton ² control unit in cockpit, WR10 remote control, Precision-9 Compass, NAC-2 computer, rudder feedback (RF25N)	
XW3100	Cruising Package	4.190 €
XC9100	Aluminium anchor FX11 incl. stowaway bag with 30 m rope and 10 m anchor chain	
XE2001	Maindrop system with lazy jacks, colour: Black	
XL7205	Seat next to pantry block	
XN2100	Bow cabin cushions, Sunbrella, colour: Grey and lightweight fabric hull covering forward cabin	
XV9420	Wind indicator - Windex	
XV9450	Flagpole	
XV9901	4 cushion fenders	
XV9902	4 mooring lines	
XW4000	SAIL START package - ELVSTRÖM (Main, Jib, Gennaker A2)	15.190 €
XE3010	ELVSTRÖM sails - main with 2 reef, jib 105% with 1 reef	
XE3105	ELVSTRÖM Gennaker "runner", colour: White, with ropes	
XW4001	SAIL START package - NORTH SAILS (Main, Jib, Gennaker A2)	19.890 €
XE3011	NORTH SAILS sails - main with 2 reef, jib 105% with 1 reef	
XE3106	NORTH SAILS Gennaker "runner", colour: White, with ropes	
XW4002	SAIL START package - QUANTUM SAILS (Main, Jib, Gennaker A2)	15.190 €
XE3012	QUANTUM SAILS sails - main with 2 reef, jib 105% with 1 reef	
XE3107	QUANTUM SAILS Gennaker "runner", colour: White, with ropes	
XW4010	SAIL UPGRADE package - ELVSTRÖM (Code 0, Gennaker A5, Staysail)	12.090 €
XE3100	ELVSTRÖM Gennaker "reacher", colour: Grey	
XE3300	ELVSTRÖM Code-0 sail - with storage bag	
XE3310	ELVSTRÖM staysail - with storage bag	

XW4011	SAIL UPGRADE package - NORTH SAILS (Code 0, Gennaker A5, Staysail)	14.390 €
XE3101	NORTH SAILS Gennaker "reacher", colour: Grey	
XE3301	NORTH SAILS Code-0 sail - with storage bag	
XE3311	NORTH SAILS staysail - with storage bag	
XW4012	SAIL UPGRADE package - QUANTUM SAILS (Code 0, Gennaker A5, Staysail)	11.490 €
XE3102	QUANTUM SAILS Gennaker "reacher", colour: Grey	
XE3302	QUANTUM SAILS Code-0 sail - with storage bag	
XE3312	QUANTUM SAILS staysail - with storage bag	
	OPTIONS	excl. VAT
	HULL	
XA1100	Center line finished in hull colour	1.090 €
	KEEL	
XB9000	Keel and rudder - not mounted	790 €
	DECK & OUTSIDE EQUIPMENT	
XC1371	Bow number in Flexiteek	1.090 €
	RIG & SAILS	
XE1030	2 outrigger with fixing system (according One Design)	1.390 €
XE3000	QUANTUM Dacron - trysail and storm jib	1.990 €
XE9010	CX15 Furler for Code0, halyard, tackline, sheets and blocks, CX10 Furler for staysail, halyard and sheets	3.690 €
	NAVIGATION & INSTRUMENTS	
XF4560	MyDehler Safety Cloud hardware with 30 days free trial subscription and an interior light, switchable by APP	1.290 €
	EQUIPMENT	
XH5409	Gas leak detector	990 €
	ACCESSORIES	
XV9380	Shrink wrap foil (for storage purpose only / not for transport)	490 €
	SHIPPING & TRANSPORT	
XZ2001	Loading on truck	390 €
XZ2003	Oversea shipping pack (cradle)	2.690 €
XZ2004	GRP frames	1.090 €
XZ2010	Single point lifting	1.090 €
XZ2020	Ready for pickup	590 €
XZ4170	World Sailing Certificate	290 €

PRICELIST



All mentioned prices in €, basic prices ex yard and excl. VAT. All weights and measures are calculated numbers based on the construction data. Changes in construction and equipment reserved. Above mentioned prices are recommended for ex yard deliveries within 4 month after order confirmation. For later delivery time the company reserves right to apply latest price list. Company reserves additional 15 working days when painted hull or deck is ordered. All measurements/figures are approximate. Errors and omissions excepted. Specification and material can be changed without notice. Valid from 2023.01.01 for deliveries until 2023.12.31.